



Accelerating success.



## Sorenson Research Park I: Sublease

960 W. Levoy Dr., Suite 200  
Taylorsville , Utah 84123

### Property Highlights

- Lease Expires 4/30/2023
- Beautiful, expansive window line
- Mostly open space
- Newly remodeled lobby
- Building offers a dock high loading door

### Office Sublease

Available:  
**3,924 SF**

Sublease Rate:

**\$15.00** PSF  
Full Service

---

### Contact:

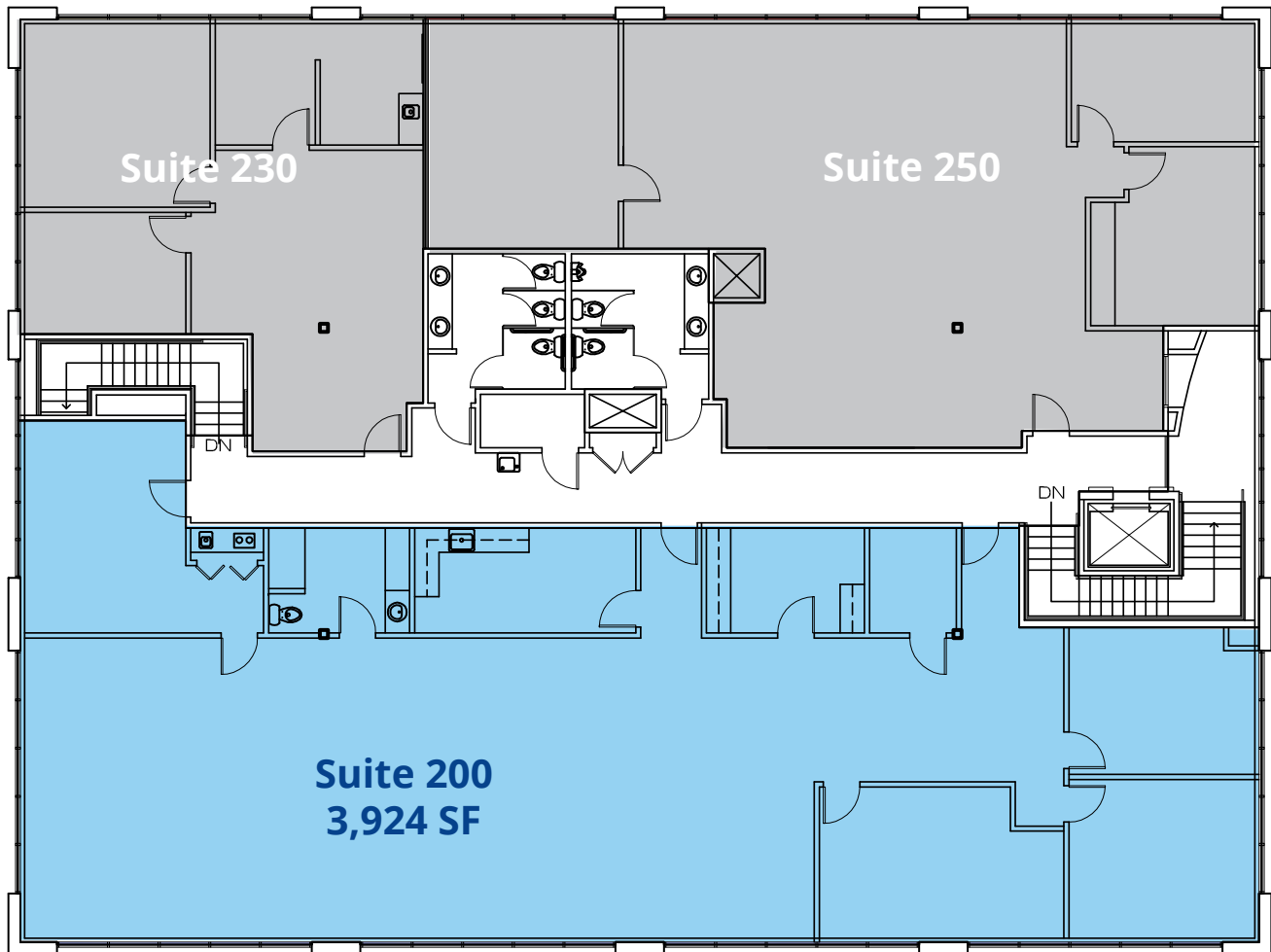
**Rusty Lugo**  
Vice President  
+1 801 947 8377  
[rusty.lugo@colliers.com](mailto:rusty.lugo@colliers.com)

**Colliers**  
111 S. Main St. | Suite 2200  
Salt Lake City, UT 84111  
Main: +1 801 947 8300  
[colliers.com](http://colliers.com)

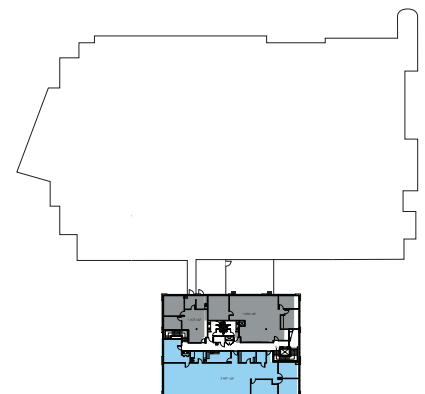
# Floor Plan

## Suite 200

3,924 SF



2nd Floor Location





960 W. Levoy Dr. | Sublease

# Photo Gallery





960 W. Levoy Dr. | 3,924 SF

# Sublease



## Contact:

### Rusty Lugo

Vice President  
+1 801 947 8377  
[rusty.lugo@colliers.com](mailto:rusty.lugo@colliers.com)

## Colliers

111 S. Main St. | Suite 2200  
Salt Lake City, UT 84111  
Main: +1 801 947 8300  
[colliers.com](http://colliers.com)

This document has been prepared by Colliers International for advertising and general information only. Colliers International makes no guarantees, representations or warranties of any kind, expressed or implied, regarding the information including, but not limited to, warranties of content, accuracy and reliability. Any interested party should undertake their own inquiries as to the accuracy of the information. Colliers International excludes unequivocally all inferred or implied terms, conditions and warranties arising out of this document and excludes all liability for loss and damages arising there from. This publication is the copyrighted property of Colliers International and/or its licensor(s). ©2021. All rights reserved.